

ARROW

Bucharest

October 2015

Šime Zekan, MD

University Hospital for Infectious Diseases

Zagreb, Croatia

Presentation

- Male patient, born 1976
- School teacher (biology)
- Lives alone
- Admitted to psychiatry 10/9/2014 for acute psychotic condition
- Deterioration (febrile, no contact)
- Transferred to general hospital
- CT scan of the brain
- Presumable meningoencephalitis
- Transferred to Hospital for Infectious Diseases

Presentation

- Noticed at admittance : thrush, seborrheic dermatitis, abundant mollusca contagiosa on the neck, chin, face
- Not noticed before (or at least not written in medical records)!
- Treated on many occasions for minor health problems, respiratory infections...
- Thrombocytopenia noticed !
- Never tested for HIV

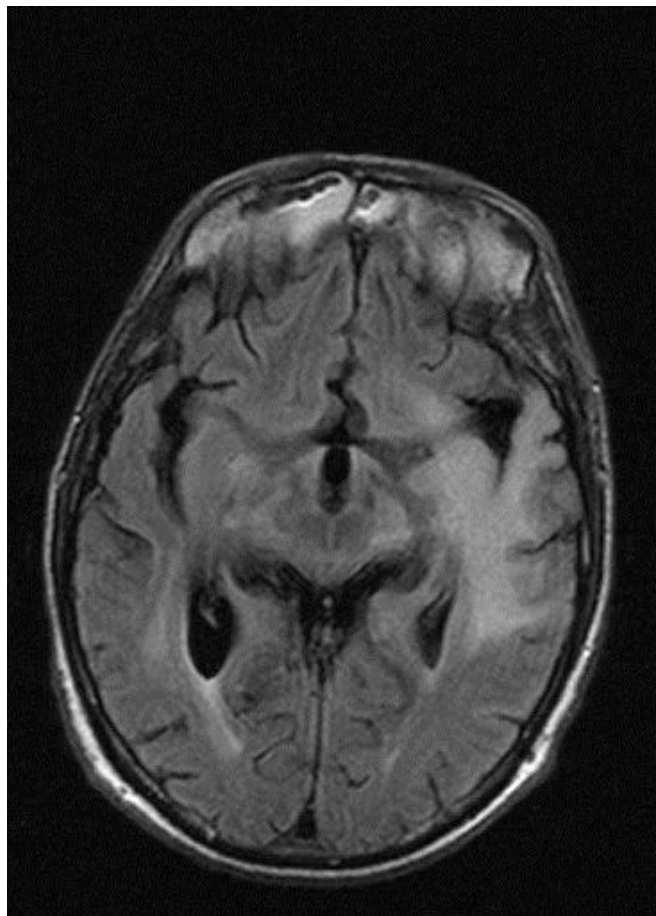
Presentation HIV and OI

- CD4 **14**
- PCR HIV -1 RNA **17 000** c/ml (plasma)
- Cryptococcal Ag 1:4 in serum
- TPHA 160, RPR neg

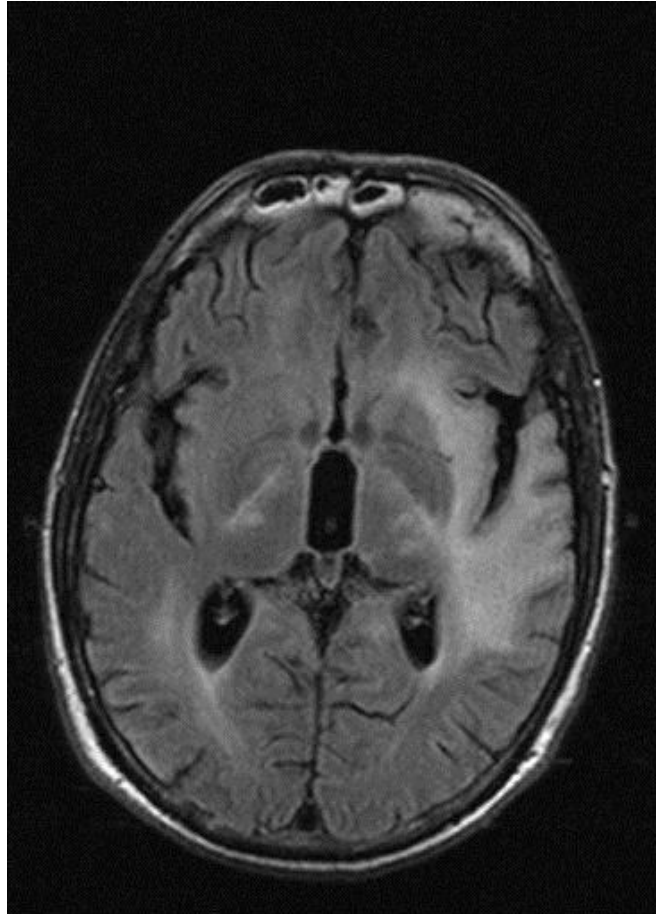
Presentation CSF

- CSF 140/3 cells (mononuclear cells 98%)
- Prot 0,79 mg/ml (slightly elevated)
- PCR HIV- 1 RNA **620 000** c/ml (CSF)
- CSF PCR Listeria, Toxo, HSV, EBV, CMV, TBC (culture, PCR) all negative
- CSF sterile (bacteriology + fungi)
- Cryptococcal Ag in CSF negative
- PCR JC virus : a) borderline positive
b) **1727 c/ml** (all later samples negative)

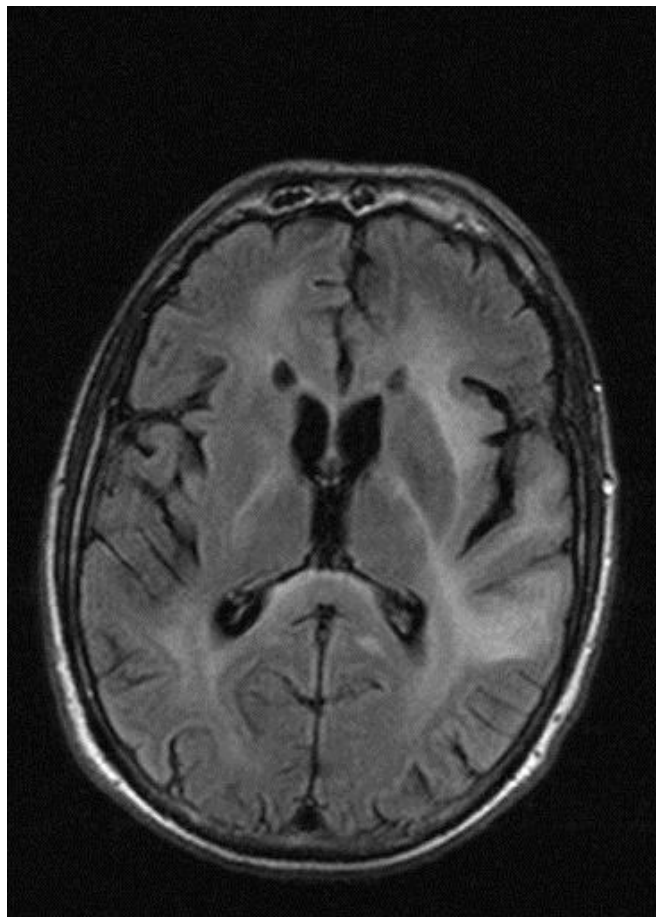
17.9.2014. 0



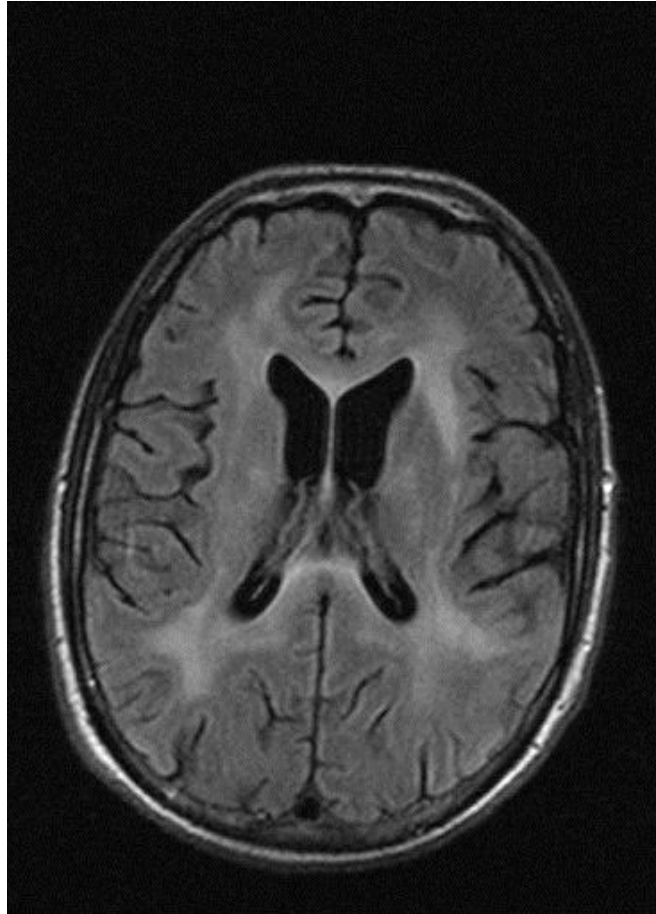
17.9.2014. 1



17.9.2014. 2



17.9.2014. 3



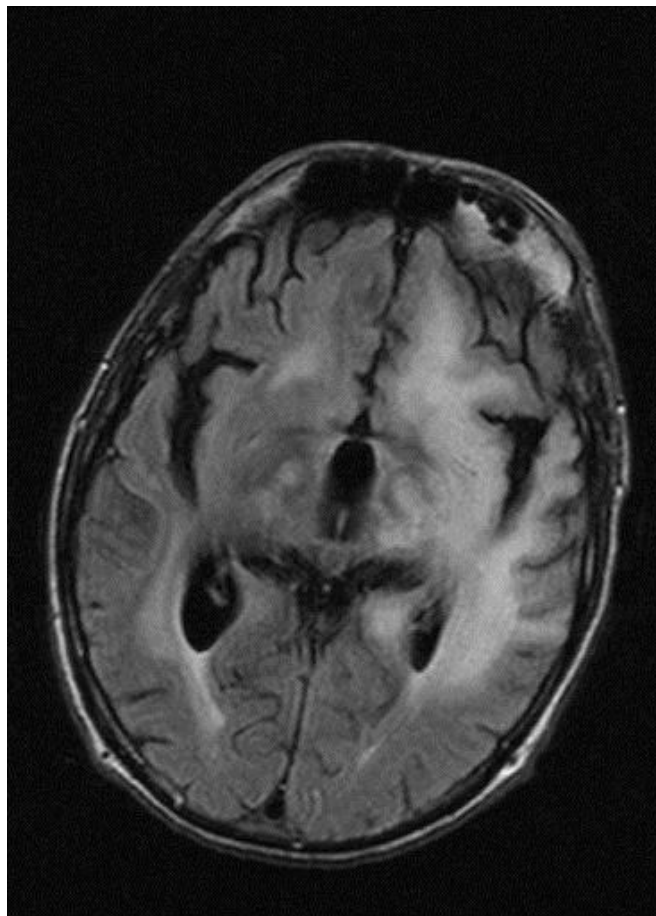
CD4, PCR HIV-1 RNA plasma/CSF

	CD4 number / %	PCR HIV-1 RNA plasma(c/ml)	PCR HIV-1 RNA CSF (c/ml)
9/2014	14 / 1,8%	17 000	620 000
10/2014	69 / 7,1%	5870	450 000
12/2014	242 / 8,1%	1059	150 068
1/2015	189 / 10,1%	471	76 380

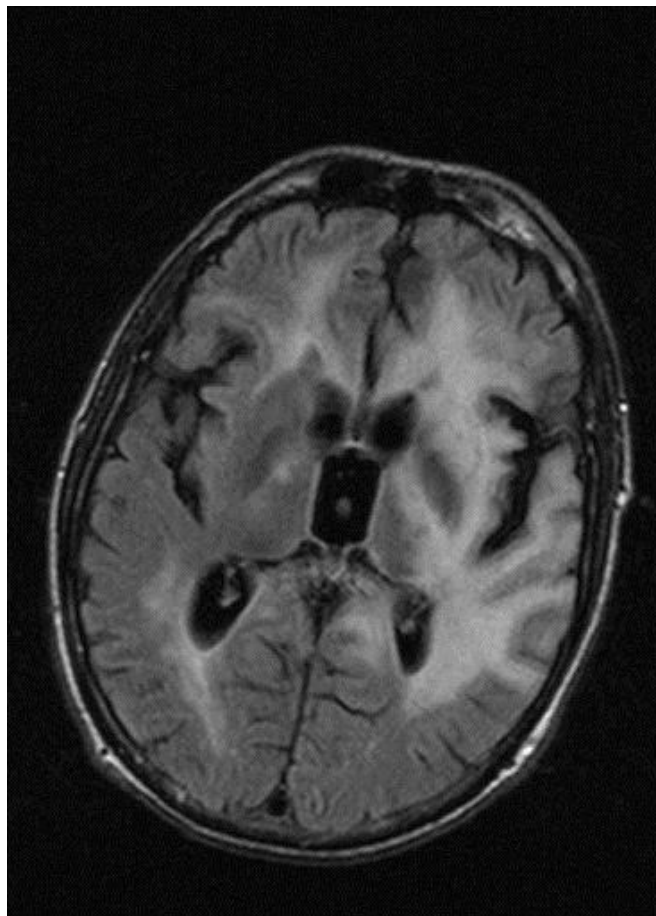
ART modifications

	ART	Reason for Start/Modification
19/09/2014	ABC + 3TC (separate 2x1), DRV/r, RAL	CSF penetration + fast viraemia decline
10/12/2014	ZDV/3TC, LPV/r, RAL	CSF penetration
16/01/2015	ABC + 3TC , LPV/r, RAL	Anemia
<i>Adherence 100% - directly observed No resistance (plasma and CSF)</i>		

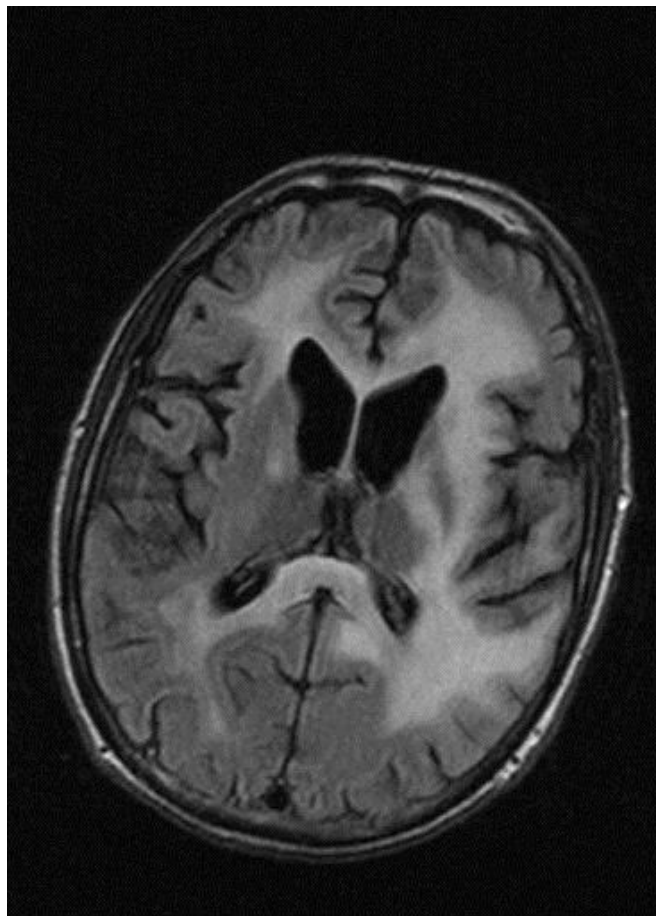
09.01.2015. 0



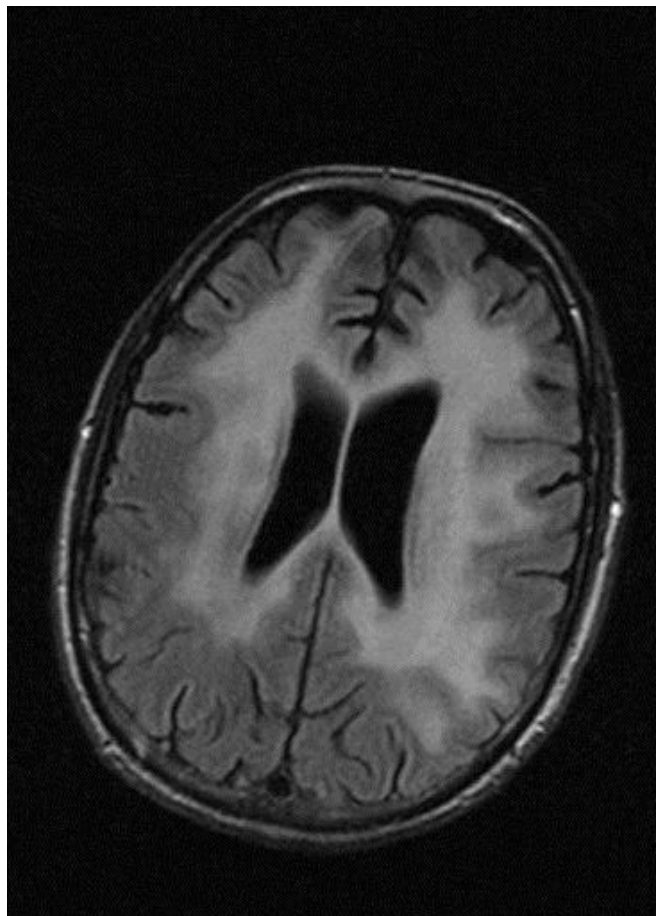
09.01.2015. 1



09.01.2015. 2



09.01.2015. 3



CD4, PCR HIV-1 RNA plasma/CSL

	CD4 number / %	PCR HIV-1 RNA plasma(c/ml)	PCR HIV-1 RNA CSF (c/ml)
9/2014	14 / 1,8%	17 000	620 000
10/2014	69 / 7,1%	5870	450 000
12/2014	242 / 8,1%	1059	150 068
1/2015	189 / 10,1%	471	76 380
7/2015	321 / 12,0%	201	27 800
9/2015	/	/	7 385

ART modifications

	ART	Reason for Start/Modification
19/09/2014	ABC + 3TC (separate 2x1) DRV/r RAL	CSF penetration + fast viraemia decline
10/12/2014	ZDV/3TC, LPV/r, RAL	CSF penetration
16/01/2015	ABC + 3TC , LPV/r, RAL	Anemia
14/07/2015	ZDV/3TC, LPV/r, RAL	CSF penetration
9/2015	ABC+3TC, LPV/r, RAL	Anemia
<i>Adherence 100% - directly observed No resistance (serum and CSF)</i>		

Conclusion

- All consecutive PCR in CSF for JC were negative
- CSF HIV not under control
- Diagnosis : PML ? HIV encephalitis ? Both ?