

# Case Presentation

Dr. Elif Tükenmez Tigen

Marmara University Medical Faculty

Infectious Disease and Clinical Microbiology

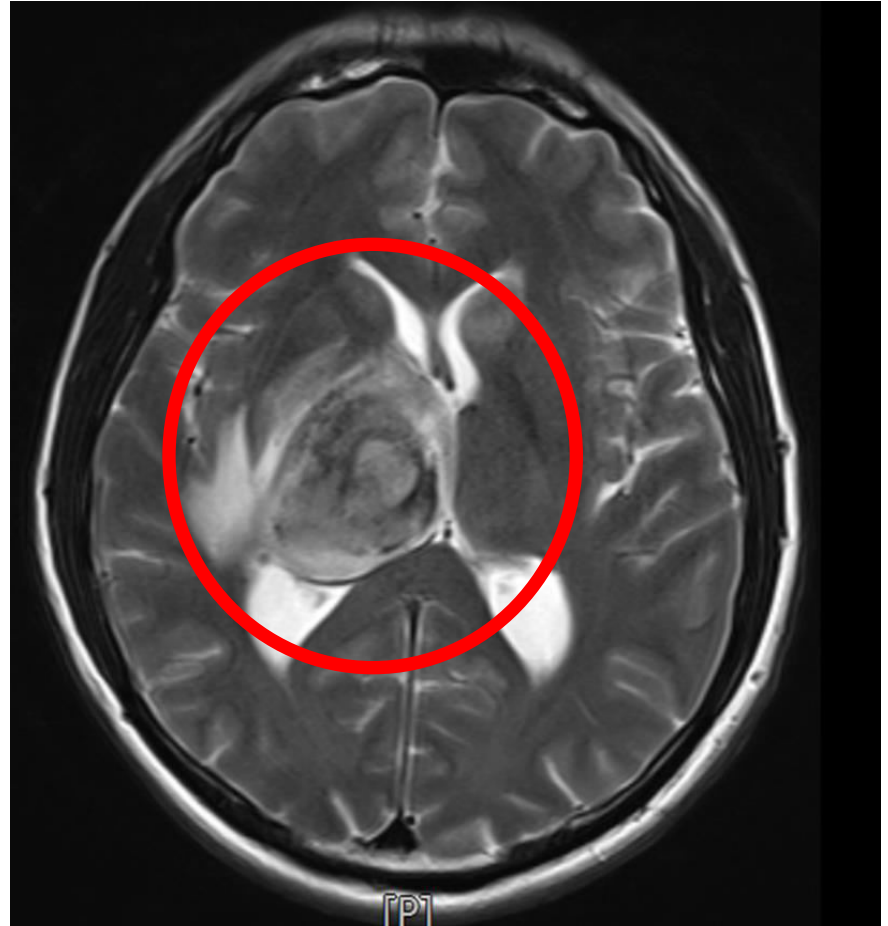
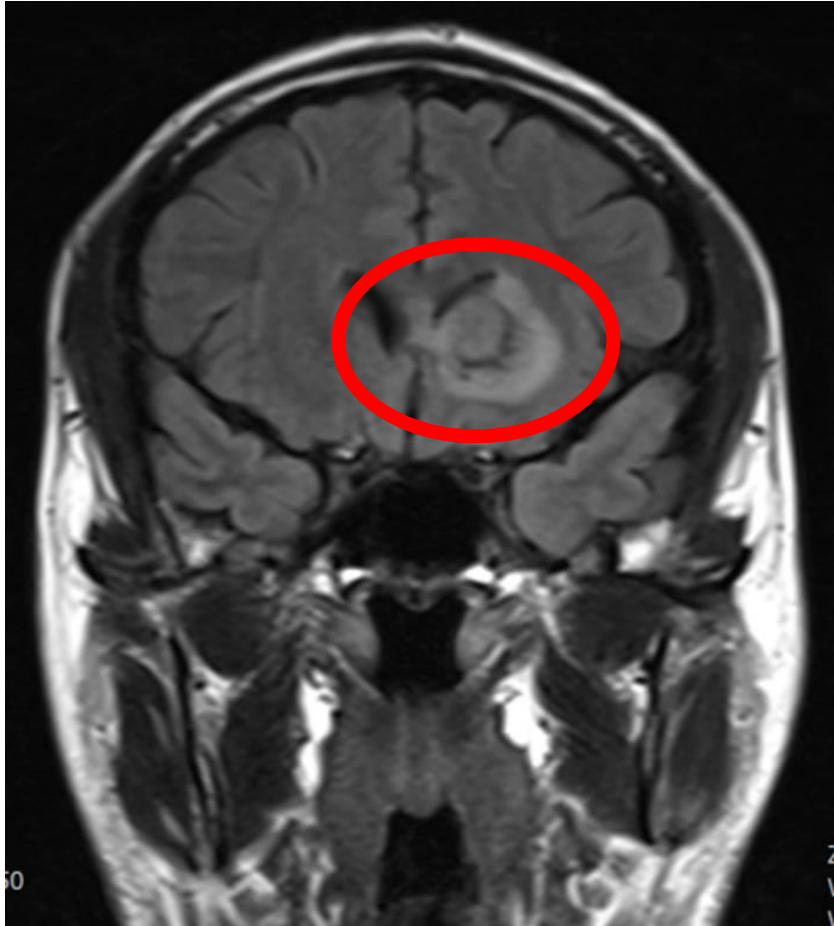
# Case

- \* 41 year's old man,
- \* Married,
- \* He presented with numbness in the left arm and leg
- \* Cranial MR → Right lateral ventricles 37x41 mm lesion
- \* Preoperative serological test → Anti HIV (+)
- \* He is a smoker for 3 packet/year
- \* He is an alcohol user 60 mL/week (25 year)
- \* Physical examination:
  - Left central facial paralysis
  - Left arm and leg muscle strength are 1/5

# Laboratory

- **Blood Count:**
  - WBC:8900/uL,
  - Lymphocyte:%28.5,
  - Hgb:13.7 gram/dL,
- **Serology**
  - HBsAg ( - )
  - anti-HBc IgG ( + )
  - anti-HBs ( + )
  - anti-HCV ( - )
  - VDRL ( - )
  - anti-HAV ( + )
  - **anti-Toxoplasmosis IgG(+ )**
  - anti-CMV IgG ( + )
  - anti-VZV IgG ( + )
- **HIV RNA : 592.687 kopy / mL**
- **CD4 count : 84 /  $\mu$ L (%3)**

# Radiology



# Differential diagnosis

- Abscess
- Toxoplasmosis
- Intracranial hemotological malignancy



- \* Seftriaxone 2x2 gr iv
- \* Metronidazole 3x500 mg
- \* Trimethoprim  
sulfametaxazole 2x2  
tab
- \* Tenofovir-emtricitabine  
1x1
- \* Lopinavir/ritonavir 2x2

# What Is The Correct Diagnosis?

\*

Stereotactic biopsy



Diffuse large B-cell lymphoma

