

# HIV SITUATION IN EUROPE



## THE PERCENTAGE OF **LATE DIAGNOSIS** VARIES ACCORDING TO THE TRANSMISSION MODE



For those infected through **heterosexual transmission**

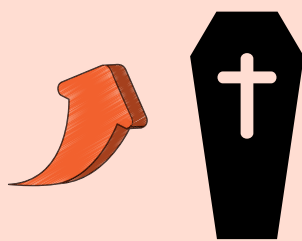


For those infected through injecting **drug use**



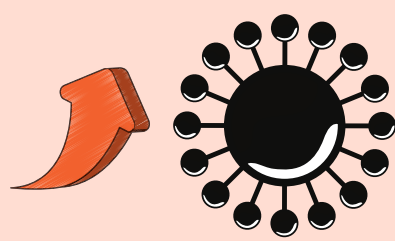
For **men** infected through **sex with men**

## WHAT IS THE IMPACT OF **LATE DIAGNOSIS**?



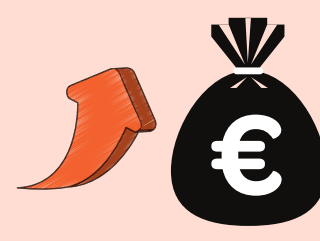
→ It causes a higher **morbidity** and **mortality** rate

→ Early diagnosis and adequate treatment guarantee instead a higher **life expectancy**



→ It increases the **risk of transmitting HIV** to other (uninfected) people

→ **54%** of all new HIV infections derive from people who don't know their **HIV status**



→ It brings **higher** HIV treatment **expenditures**

→ Those expenses are up to **3.7 times** higher than expenses for timely diagnosis

## WHAT IS STOPPING PEOPLE FROM TAKING AN HIV TEST?



**Patient-level** barriers to HIV testing:

- Worries about **stigma** or **discrimination**;
- Difficulty accessing **testing facilities**



**Healthcare provider** barriers to HIV testing:

- Insufficient **time**;
- Lack of **knowledge** or inadequate **reimbursement**



**Institutional & policy-level** barriers to HIV testing:

- Lack of **national policy/guidelines**;
- **Laws** and justice systems that jeopardise HIV prevention efforts



info@eacsociety.org



<https://www.eacsociety.org/home/home.html>



+32 2 316 10 19



@EACsociety



@EACsociety



@eacsociety



**EACS**  
European  
AIDS  
Clinical  
Society